

**BMW
EWS Mileage Reseter
User's Guide**

Table of contents

1. Introduction	3
2. Checklist	4
3. Installation and Use	5
4. LEDs and Buzzer signals	9
Appendix 1	10
Appendix 2	11

1. Introduction

This manual will guide you through the installation and operation of the BMW EWS module reset tool, referenced hereafter as the EWS Mileage Reseter.

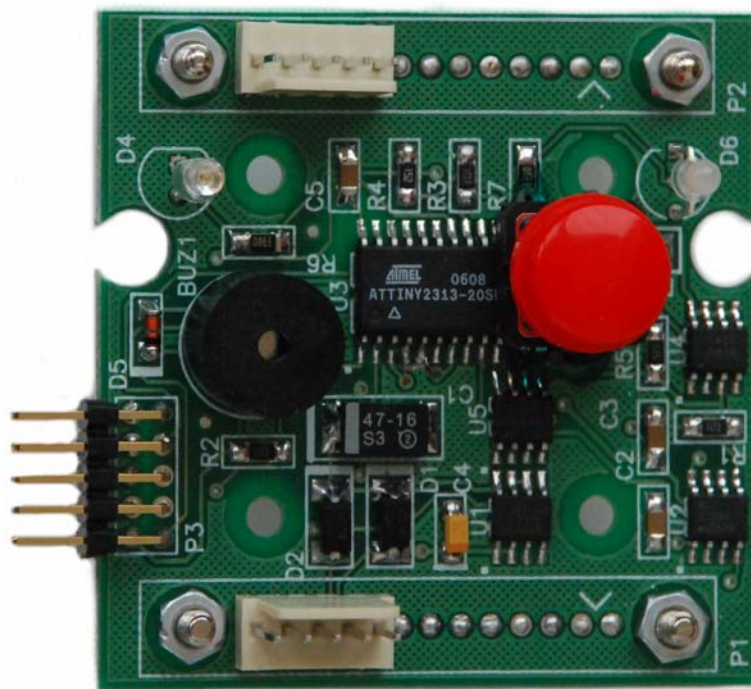
EWS Mileage Reseter tool function:

The EWS Mileage Reseter is stand-alone unit designed for coding purposes in different type of vehicles manufactured by BMW, that's contains immobilizer module (EWS). It works through internal service diagnostic bus. Complete list of supported vehicles see in Appendix 1.

EWS Mileage Reseter tool futures:

Two input/output connectors especially designed and adopted to be switched to EWS harness output in a vehicle. Two LEDs – visually indicates external power good and status of coding process. Internal buzzer duplicate coding status by sound signals. One reset button. Plastic header for leading main EWS's microcontroller in to service mode.

All this futures allow complete reset of EWS by using power supply of the vehicle and without any other additional equipment within 3 seconds.



Picture 1. Main view

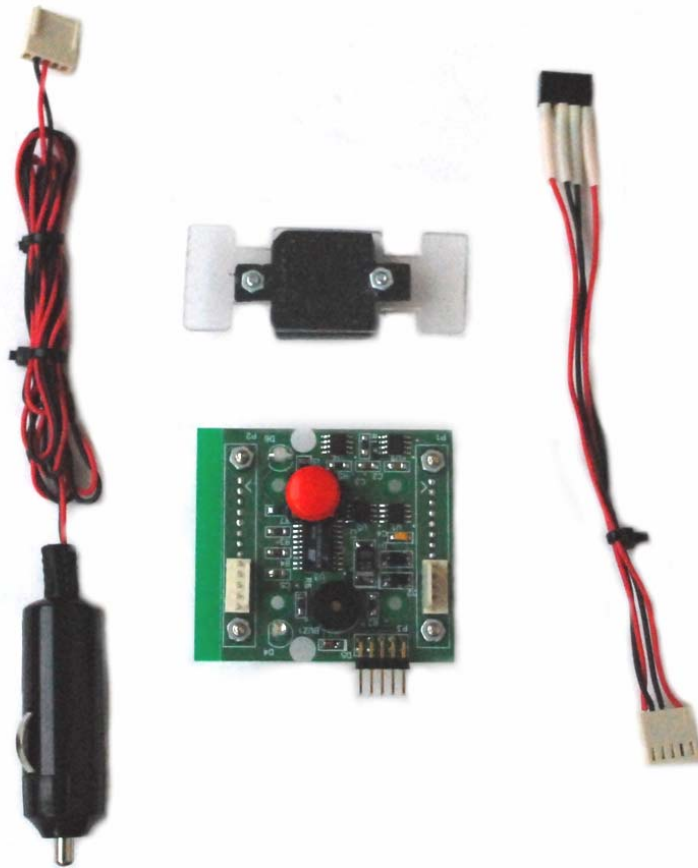
2. Checklist

The following describes what items are supplied with the EWS Mileage Reseter (see Picture 2).

- EWS Mileage Reseter main unit – *supplied*
- Service header – *supplied*
- Power plug – *supplied*
- Communication cable (to EWS) – *supplied*

Note: Check all items shipped carefully. If some items are absent or damaged, please, contact your sales representative directly.

Note: All equipment supplied by ETL has limited time warranty 45 business days from the applicable data on invoice. Only in this period equipment can be changed.

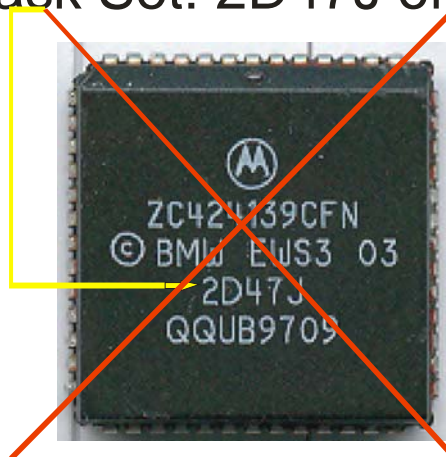


Picture 2. Reseter set

3. Installation and Use

WARNING: EWS Mileage Reseter must be used only with EWS III-IV modules HW SW Motorola microcontrollers Mask Set 0D46J. In case of using another mask set like shown below all EEPROM contents will be erased completely. We are not responsible of using **EWS Mileage Reseter** on modules have mask sets 2D47J and 1D47J.

Mask Set: 2D47J or 1D47J



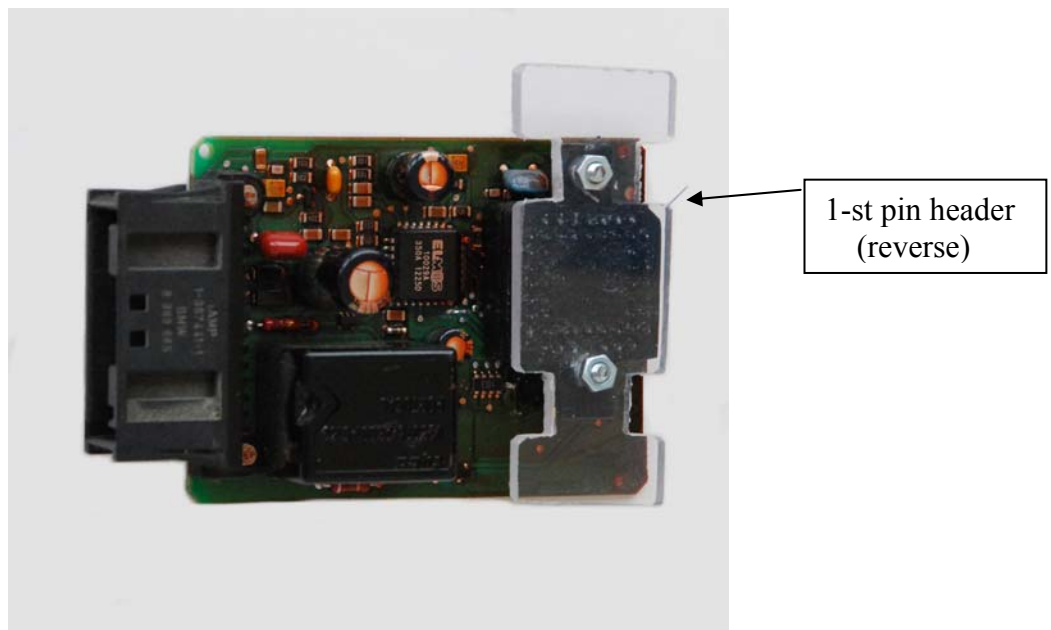
Picture 3. Motorola mask set description

Step 1. Remove EWS module, located under stirring wheel.

Step 2. Remove plastic enclosure from EWS electronic board.

Step 3. Place Service header on the top of Motorola microcontroller (see Picture 4).

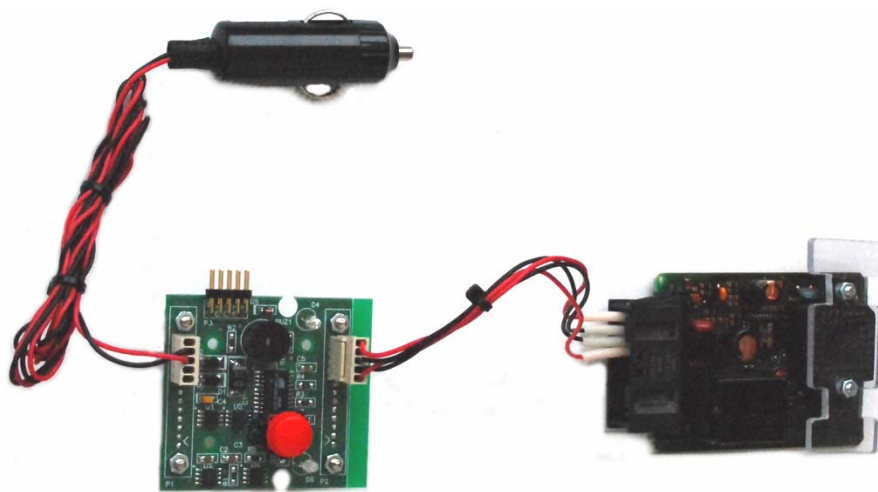
Warning: Put attention on 1st pin key.



Picture 4. Service Header placement

Step 4.

- a) Switch EWS main board in to output connector of EWS Mileage Reseter.
- b) Switch EWS Mileage Reseter in to EWS harness output (see Pictures 5, 6).



Picture 5. EWS Reseter connection

Step 5. After everything placed in order power LED will light green.

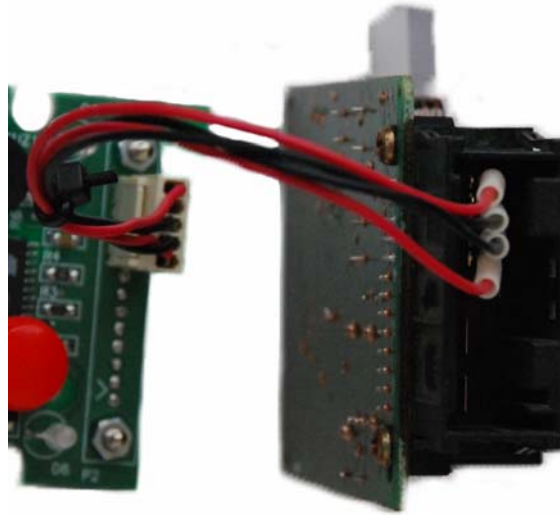
Note: If **Power LED** blinking and buzzer beeps rapidly- car battery low.

Car must be powered from external power source.

** Normal power supply operation voltage ≥ 13 Volts.

Step 6. Press **Reset Button**. Effecting of pressing the button is short buzzer beep. Within 3 seconds reset will be completed and **Status LED** will turn green and buzzer beep once.

Note: If **Status LED** will turn red and buzzer beeps rapidly see detail in LED and Buzzer signals section.



Picture 6. Connection of EWS Reseter front view

Step 7. **EWS Mileage Reseter** can be disconnected from EWS harness output after **Status LED** will turn off.

Step 8. Reset completed and all elements must be returned to initial state.

4. LEDs and Buzzer signals

POWER LED TABLE

Permanent green light	POWER OK
Green flashing continuity	POWER failed, voltage lower than 9V
No light	POWER not applied, EWS Mileage Reseter not properly connected to EWS harness output

STATUS LED TABLE

Green light	Operation completed successfully
Red light	Operation failed
No light	Standby mode. No operation.

BUZZER BEEPS TABLE

Beeps №	Description	Remedy/Solution
1 beep	Reset completed successfully	
2 beep	Wrong connection or pure contact.	Check switch between EWS Mileage Reseter to EWS main board.
3 beep	Check sum error after reset.	Reinitiate procedure
4 beep	Communication Error.	Check Service Header is mounted properly.
5 beep	External POWER failed, voltage lower than 12V.	Apply external Power source to a vehicle.

Appendix 1

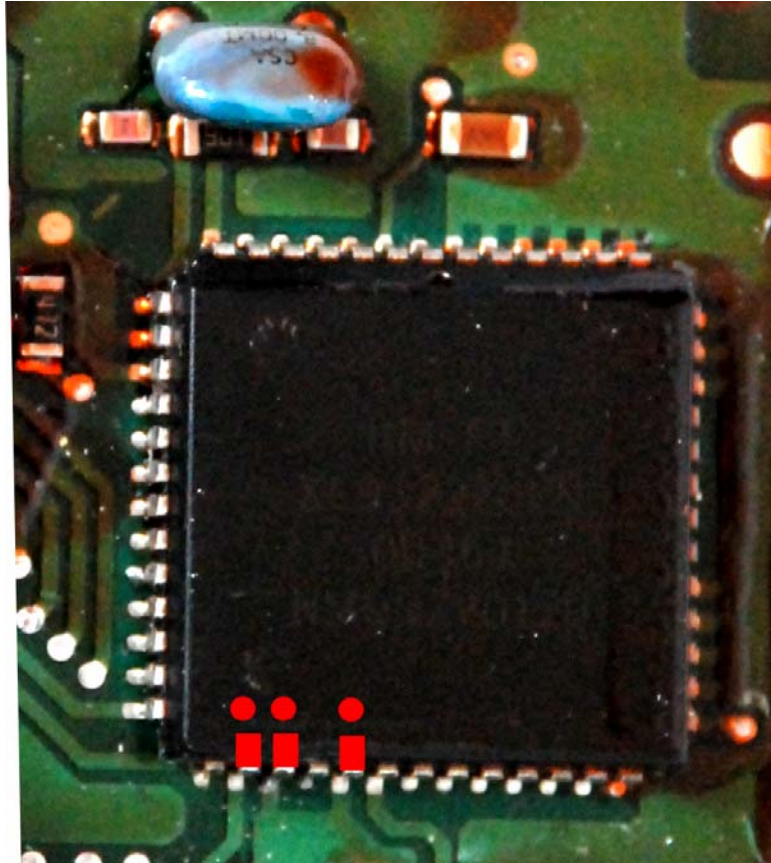
Table of LAND ROVER cars supported by EWS Mileage Rester		
Model	Year	EWS (III, IV)
Range Rover HSE	2002	On board Reset
	2003	On board Reset

Table of MINI cars supported by EWS Mileage Rester		
Model	Year	EWS (III, IV)
Mini Cooper	2002	On board Reset
	2003	On board Reset

Table of BMW cars supported by EWS Mileage Reseter		
BMW/M Power		Immobilize Control Unit
Model	Year	EWS (I, III)
3 Series Body: E-46 Z4	1999	On board Reset
	2000	On board Reset
	2001	On board Reset
	2002	On board Reset
	2003	On board Reset
	2004	On board Reset
Model	Year	EWS (I, III)
5 Series Body: E-38	1996	Not Supported (1D47J)
	1997	Not Supported (1D47J)
	1998	Not Supported (2D47J)
	1999	On board Reset
	2000	On board Reset
	2001	On board Reset
	2002	On board Reset
Model	Year	EWS (I, III)
7 Series Body: E-38	1996	Not Supported (1D47J)
	1997	Not Supported (1D47J)
	1998	Not Supported (2D47J)
	1999	On board Reset
	2000	On board Reset
	2001	On board Reset
Model	Year	EWS (I, III)
X Series Body: E-59	1999	On board Reset
	2000	On board Reset
	2001	On board Reset
	2002	On board Reset
	2003	On board Reset
	2004	On board Reset

Appendix 2

ATTENTION: scrape away plastic cover from pins 22, 23, 25 before using service header



Picture 7. Pay attention to plastic cover before using service header